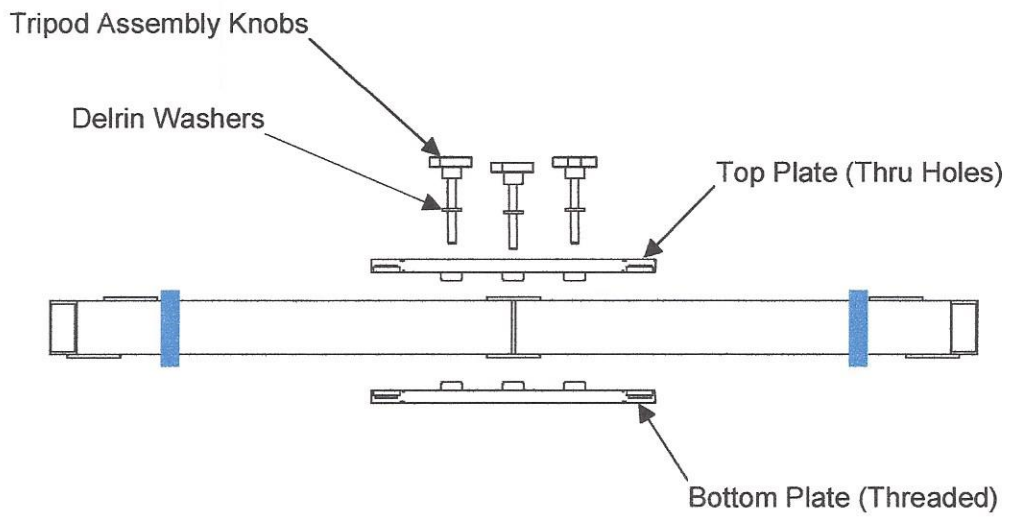
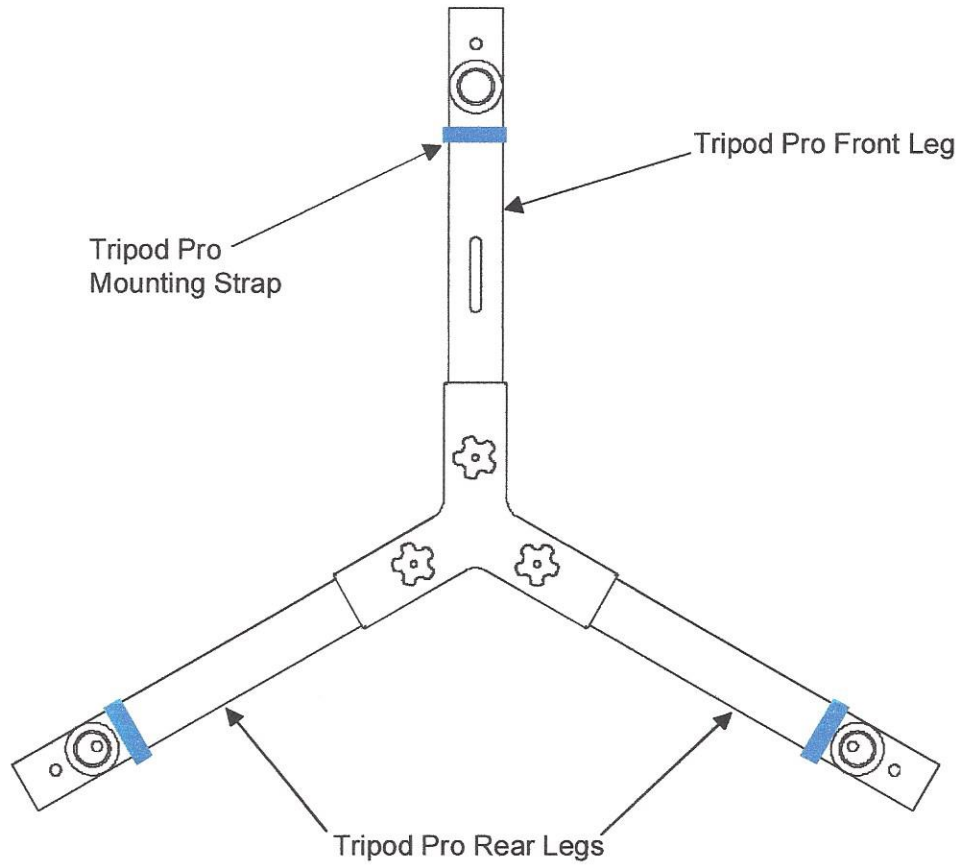
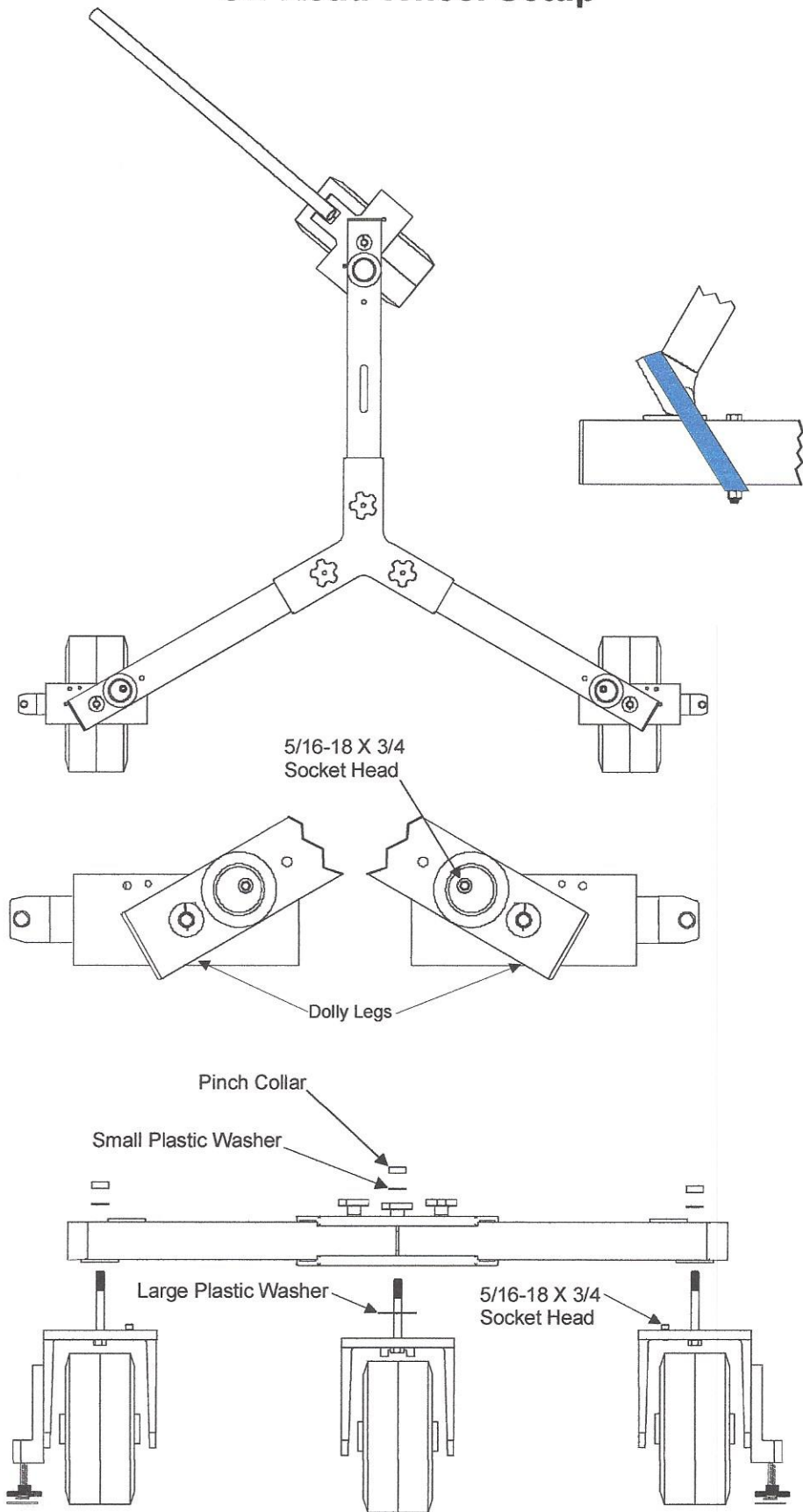


Triangle Pro 3 Wheel Frame Setup



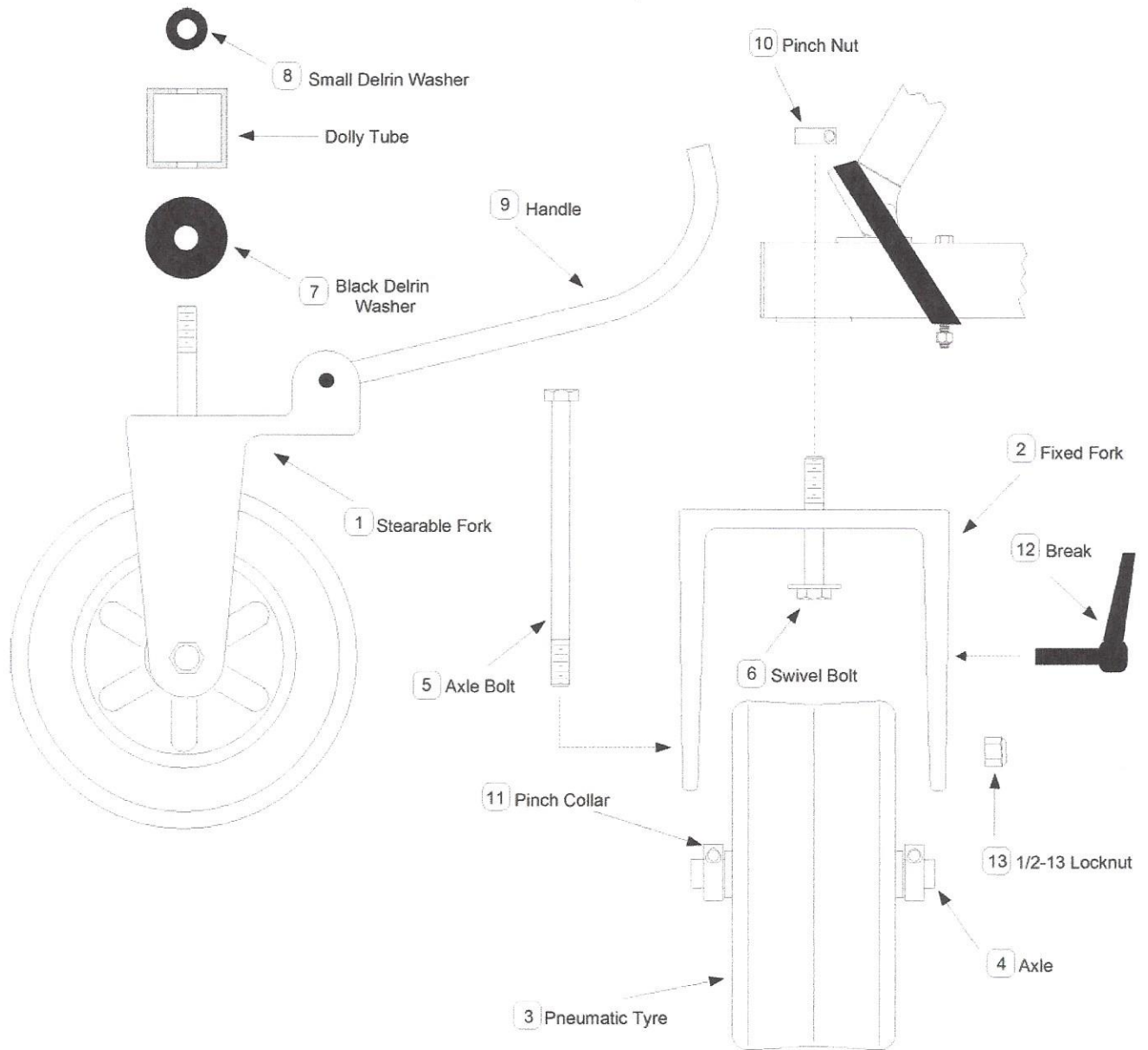
Off Road Wheel Setup



3 WHEEL OFF ROAD KIT

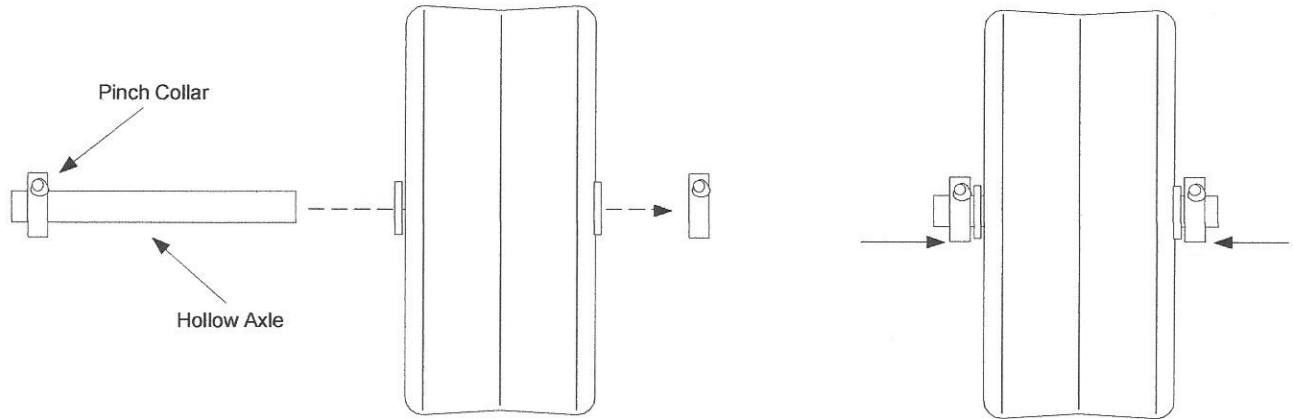
If you are missing any of the following items, please contact Stanton Video immediately.
TN 602 493-9505

- | | |
|----------------------------|----------------------------|
| 1. Steerable Fork (1) | 8. Small Delrin Washer (3) |
| 2. Fixed Fork (2) | 9. Handle (1) |
| 3. Pneumatic Tire (3) | 10. Pinch Nut (3) |
| 4. Axle (3) | 11. Pinch Collar (6) |
| 5. Axle Bolt (3) | 12. Break (3) |
| 6. Swivel Bolt (3) | 13. 1/2-13 Locknut (3) |
| 7. Black Delrin Washer (1) | |

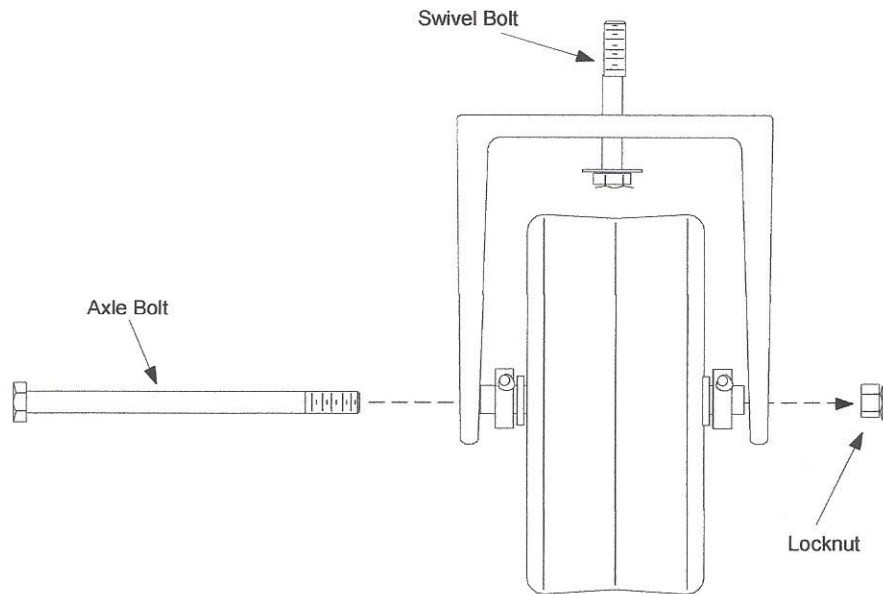


WHEEL ASSEMBLY

1. Slide the Wheel onto the Axle and lock in place with the Pinch Collars. Repeat this operation on all three wheels.
2. Adjust the collars so that the wheel is centered on the axle. The collars should be tight against the wheel bearings so as to take as much "play" out of the bearings as possible.

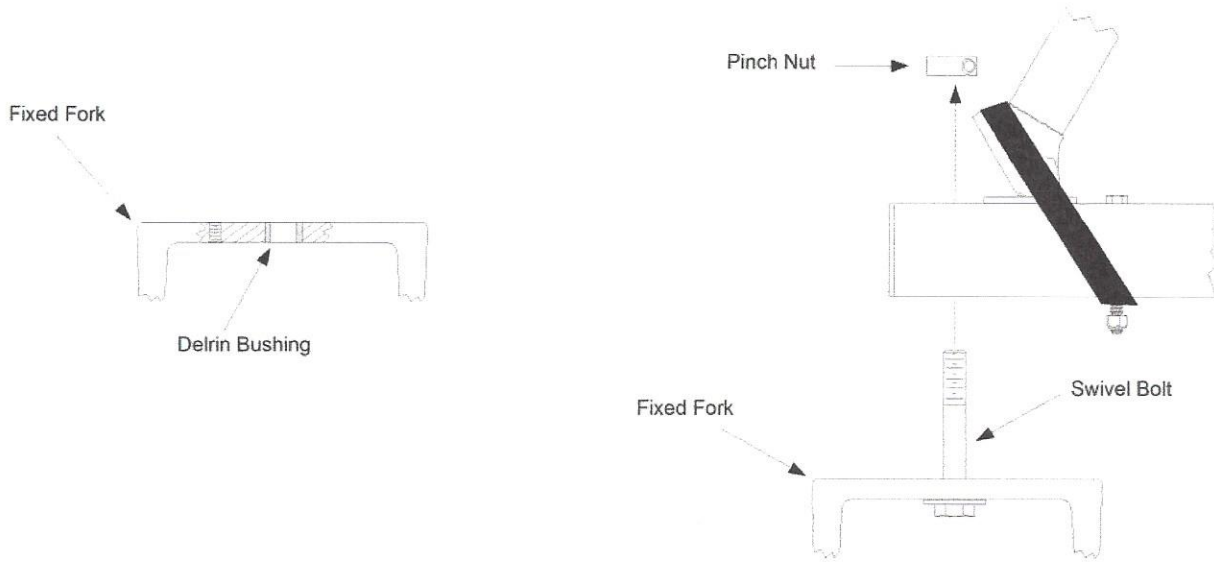


3. Insert the Swivel Bolt through the Fork, then position the Wheel and Axle so that the Axle bolt can be run through the Fork and Axle.



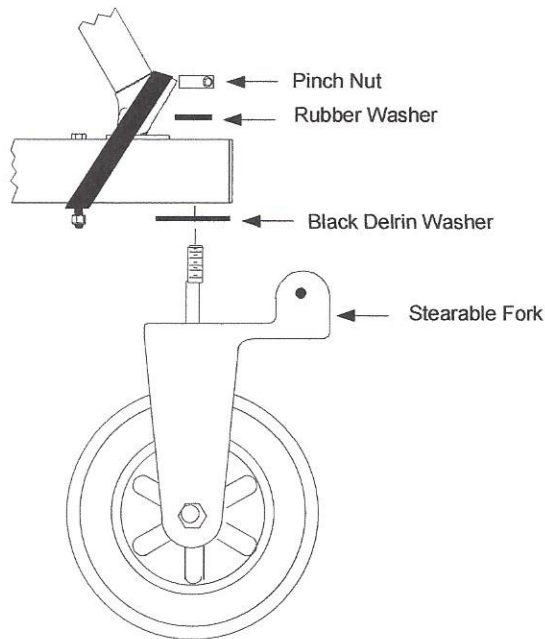
4. Attach the Fixed Fork and Wheel assembly to the dolly tube by means of the Swivel Bolt and Pinch nut. Lock the Pinch Nut to the Swivel bolt by tightening the pinch nut socket screw.

NOTE: The Delrin using shown below is used to sleeve the hole in the fork top plate. This bushing is changed if you install the Crab Dolly Kit.

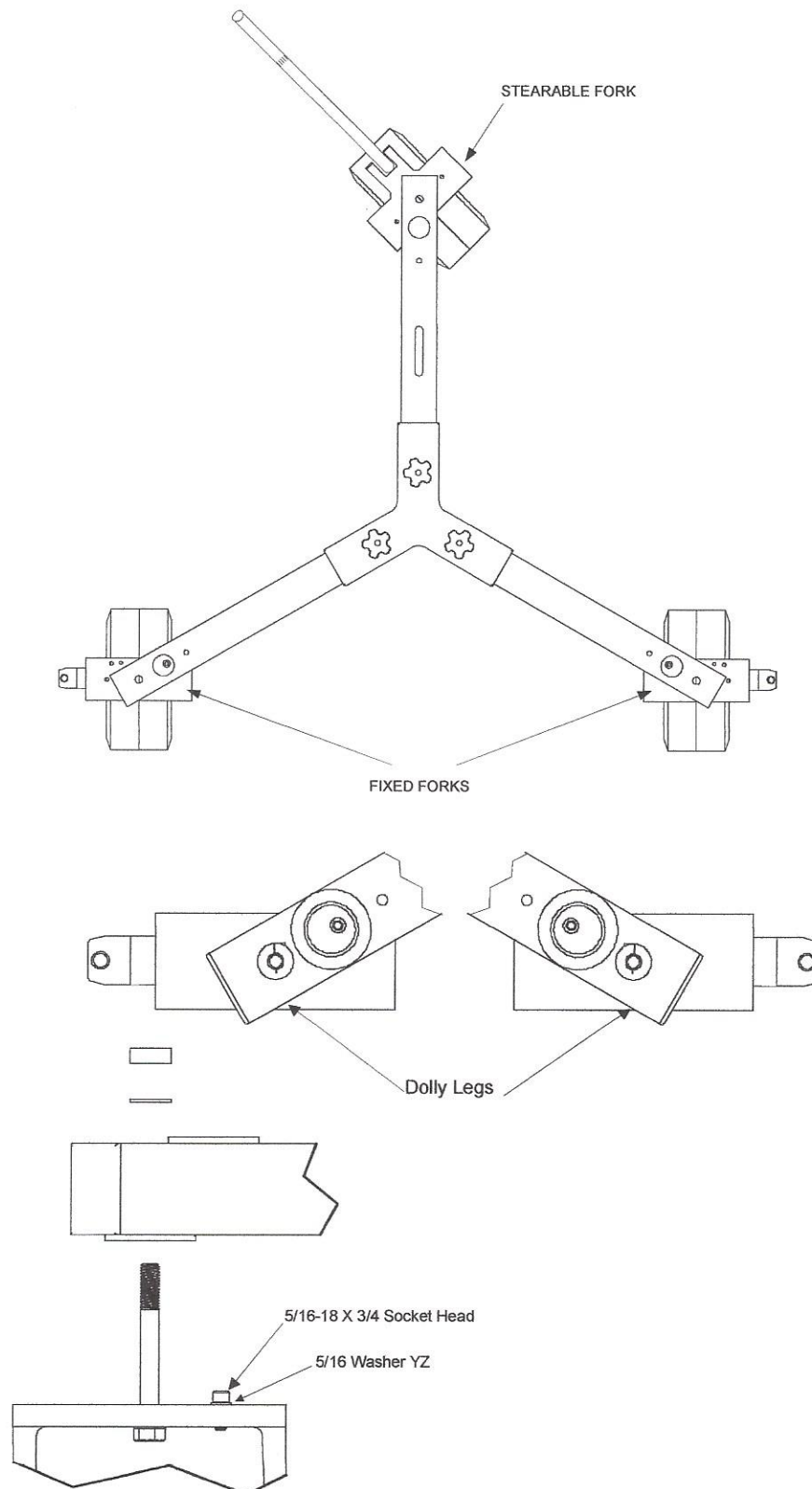


5. Attach the Steerable Fork and Wheel to the Dolly. Tighten the Pinch Nut down onto the Rubber Washer. You may find you have to use pliers or Channel Locks but **do not over tighten**. Lock the Pinch Nut with the pinch nut socket screw.

NOTE: The rubber washer prevents the Swivel Bolt from rotating with the Steerable Fork and wearing out the Aluminum dolly tube.



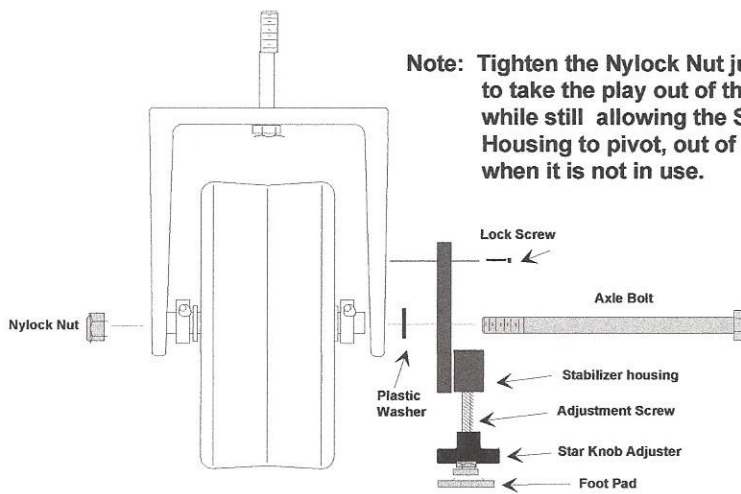
Shown below is the proper mounting location for the Fixed and Stearable Forks.



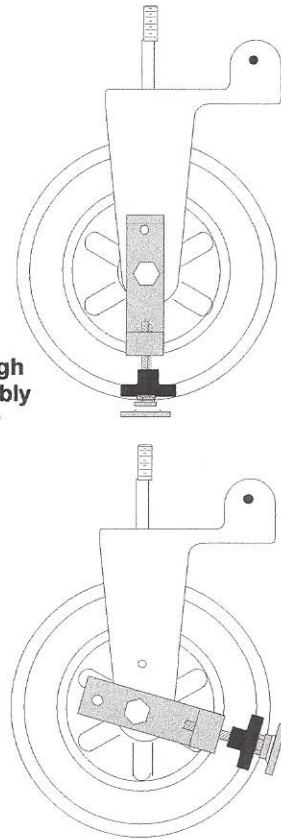
Jimmy Jib Dolly Stabilizer

You should have received

1. lock screw (2)
2. Stabilizers Assembly
3. Plastic Washer



Note: Tighten the Nylock Nut just enough to take the play out of the assembly while still allowing the Stabilizer Housing to pivot, out of the way when it is not in use.



Note: The Axle bolt may not be long enough to engage the nylock on the nut. You will therefore need to put some type of thread locking compound on the axle threads before reinstalling the nut.

The Dolly Stabilizer kit is an **"optional"** accessory